

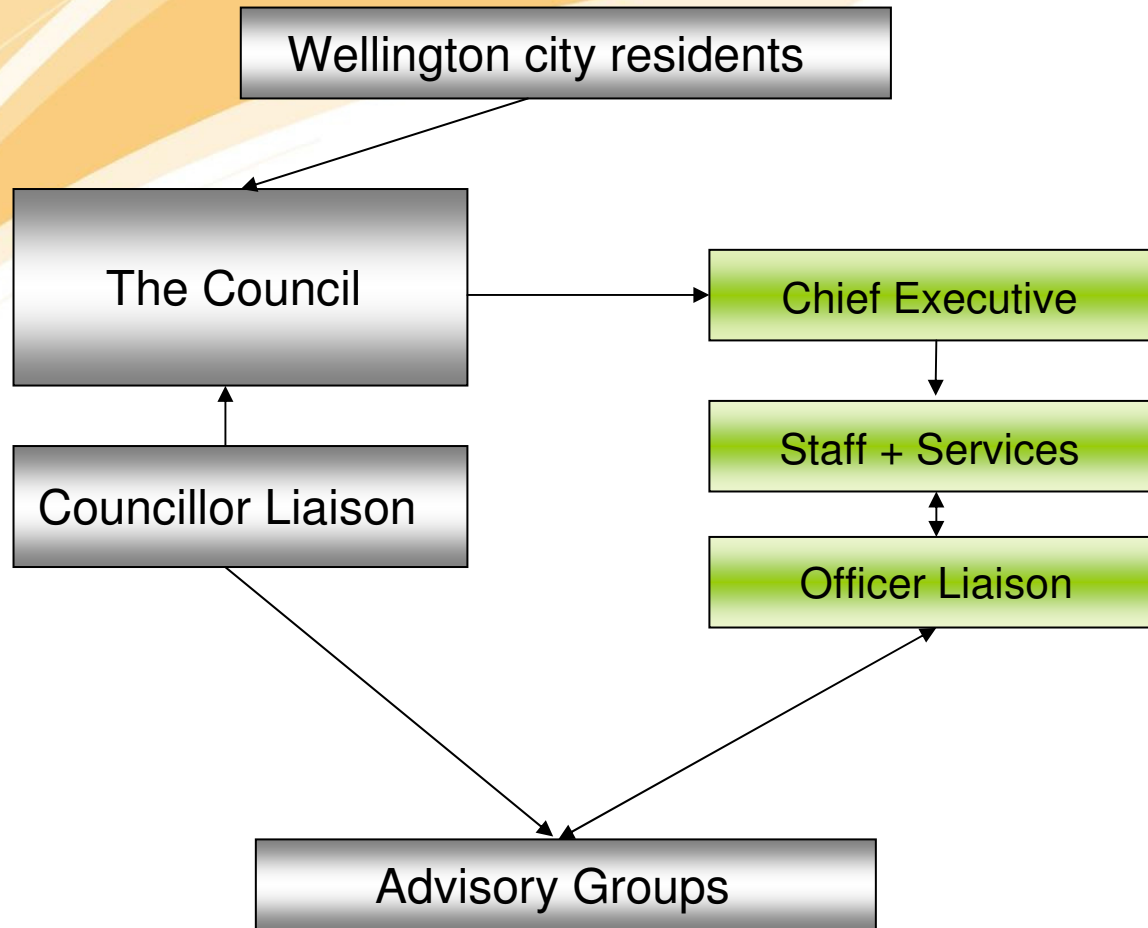
# Environmental reference group

20 February 2012

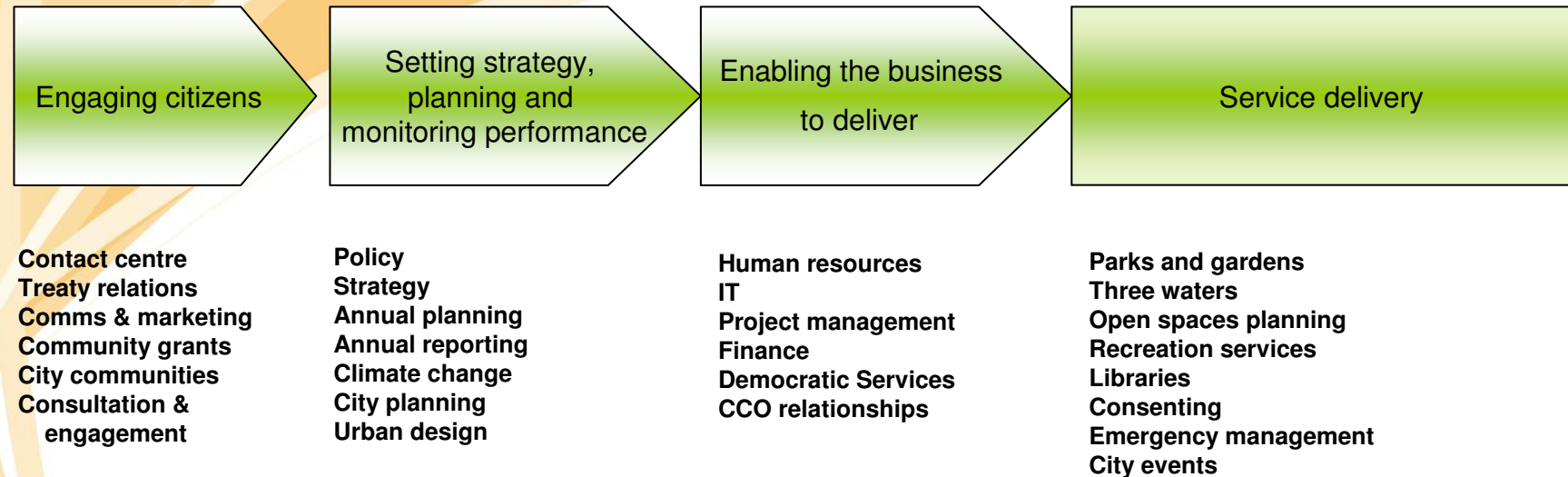
## Statutory purpose

- enable local decision-making and action by and on behalf of the people of Wellington
- promote the cultural, economic, social and environmental wellbeing of the people of Wellington, now and in the future.

## Governance structure: advisory groups

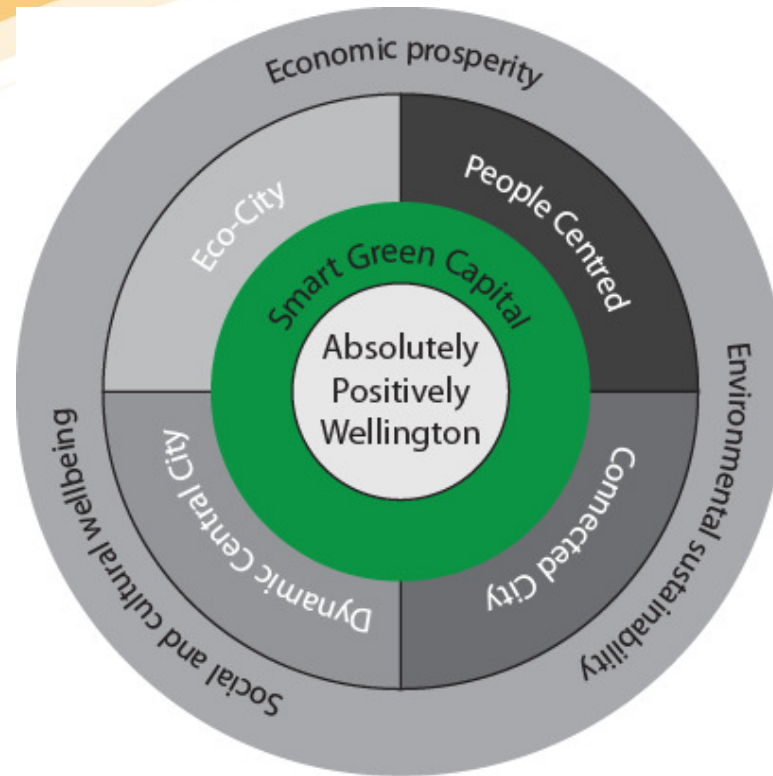


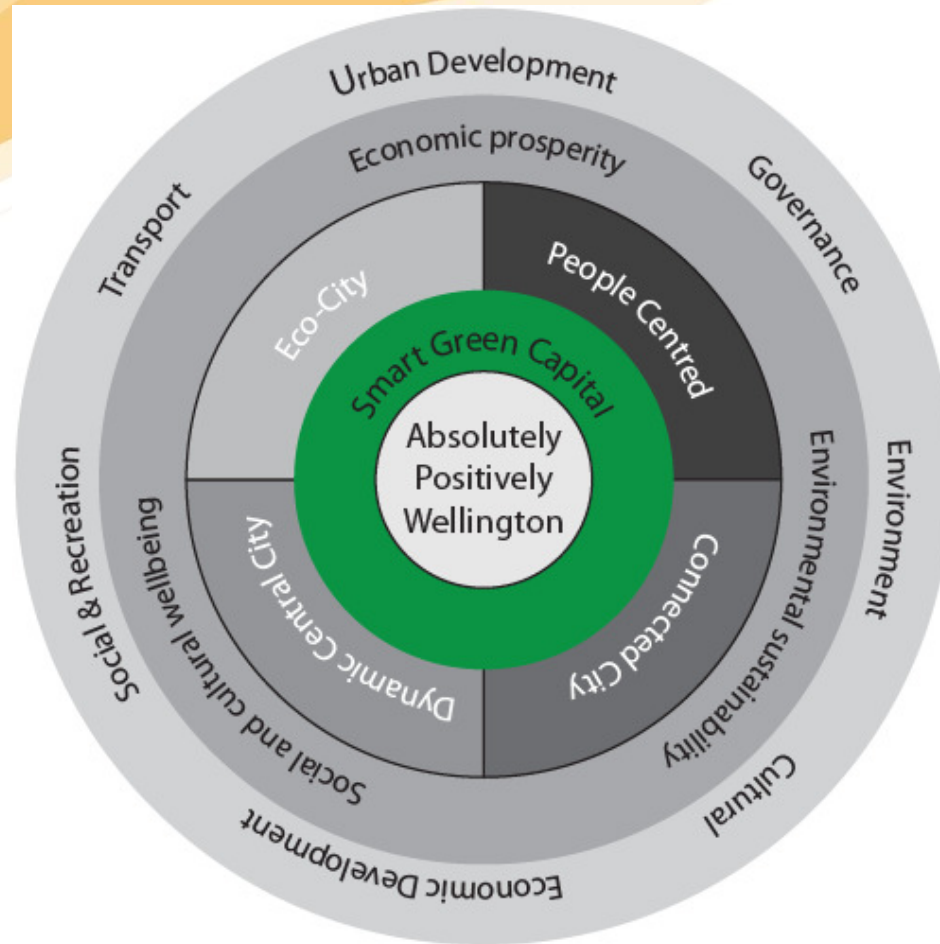
# Organisational structure



# City direction





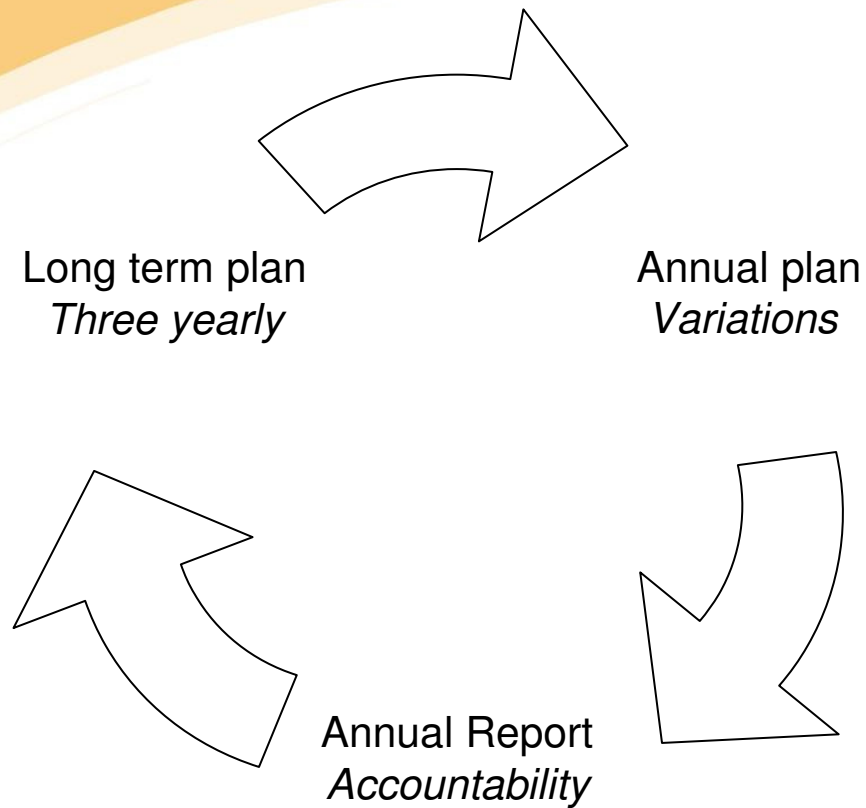








# Planning cycle



# The numbers

## **Revenue**

Total \$400 million  
\$215 million rates and levies  
\$185 million from other sources

## **Expenditure**

\$370 million

## **Total Assets**

\$6.2 billion